

OUR SPECIALITY
**WORK
BENCHES**
FOR ALL!

sjobergs.se

scandi plus 1825

SPECIFICATIONS	inches	mm
SCANDI PLUS 1825	Nr 33279	
Length of worktop	70 ^{3/32}	1730
Total length	73 ^{5/32}	1858
Width of worktop	22 ^{13/16}	580
Total width	27 ^{15/16}	710
Thickness of worktop	1 ^{1/2}	38
Thickness of skirt	4 ^{5/16}	110
Vise capacity	4 ^{1/2}	115
Working height	35 ^{7/16}	900
Weight	138 lbs	63 kg

CUPBOARD SM03	Nr 33457	
Width	40 ^{15/16}	1040
Height	16 ^{1/8}	410
Weight	55 lbs	25 kg

CUPBOARD SM07	Nr 33273	
Width	40 ^{15/16}	1040
Height	16 ^{1/8}	410
Weight	48 lbs	21 kg

SCANDI PLUS 1825+SM03

Nr 33279+33457



SCANDI PLUS 1825

– THE PERFECT BENCH FOR THE DISCERNING WOODWORKER!

The top, made of beech, has two double rows of bench dog holes working from each vise. You can use the holdfast in all the dog holes on the top and in the trestle. All the Sjöbergs accessories make this bench very flexible.

Package size Scandi Plus 1825, 1930x750x170 mm

Package size SM03, 1055x500x100 mm

Package size SM07, 1070x510x95 mm

SCANDI PLUS 1825+SM07



Nr 33279+33273

SCANDI PLUS 1825



Nr 33279

EAN 7316703279180

SM03



Nr 33457

EAN 7316703457038

SM07



Nr 33273

EAN 7316703273072

JAW CUSHIONS



Nr 33381

EAN 73166703381104

ST11 HOLDFAST



Nr 33639

EAN 7316703639113

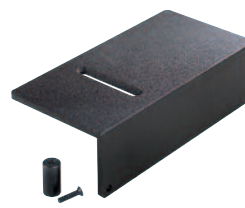
BENCH DOGS



Nr 33290 4-pack

EAN 7316703290345

BENCH DOGS



Nr 33617

EAN 7316703617104

FILE CLAMP



Nr 33492

EAN 7316703492107



Sjöbergs Workbenches AB • Fabriksgatan 1
SE- 570 02 Stockaryd • Sweden
Tel +46 (0)382-257 00
office@sjobergs.se • sjobergs.se

